



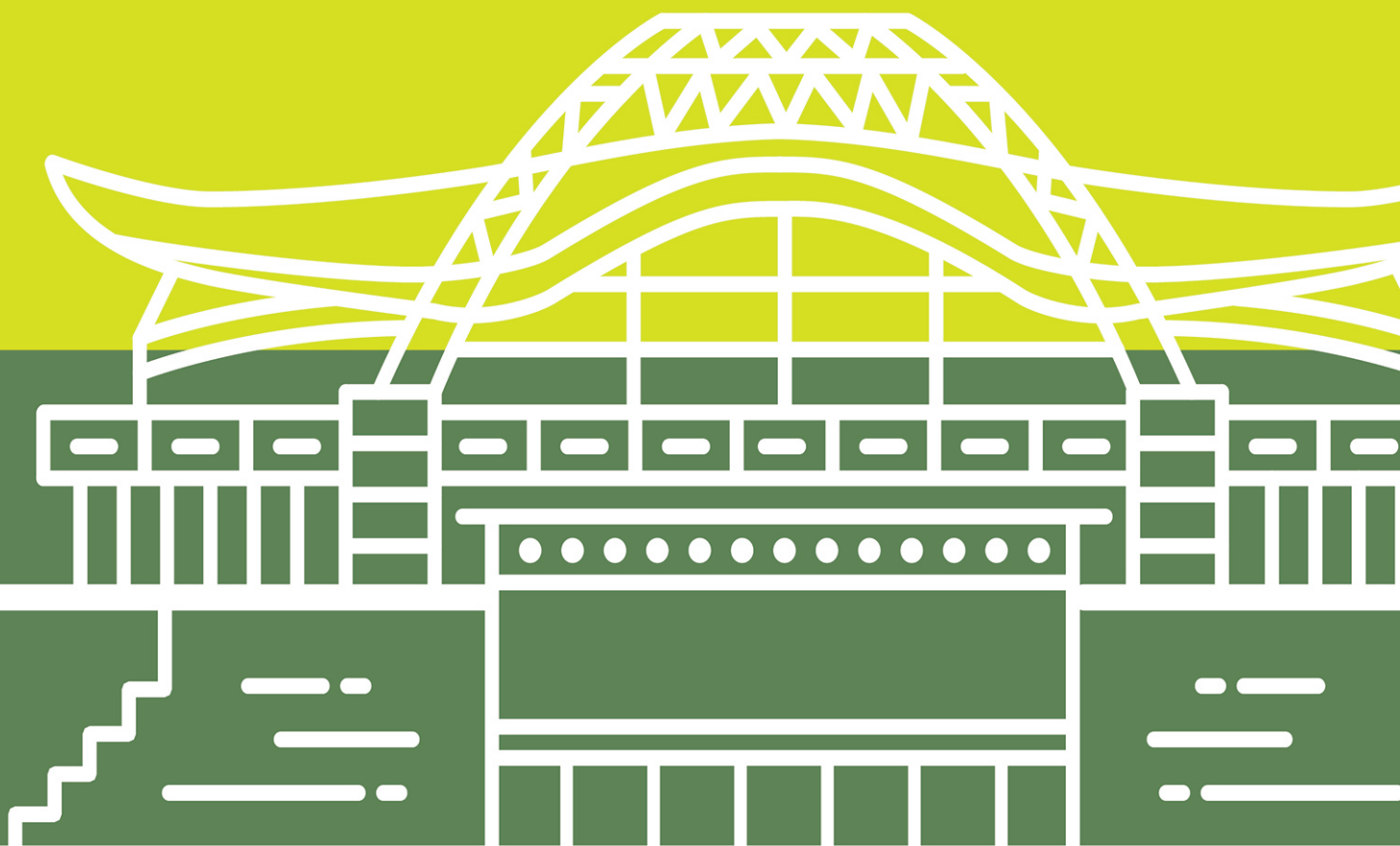
北京理工大学
BEIJING INSTITUTE OF TECHNOLOGY



Study in BIT

2019年研究生招生简章

2019 Admission Book
Master and PhD Programs



北京理工大学简介

北京理工大学创立于1940年,是中国国家重点大学,首批进入国家“211工程”、“985工程”和“世界一流大学”建设高校行列。2017年,在全球具有广泛影响力的英国QS“世界大学500强”中,位列世界大学第389位。

北京理工大学专业以理工科为主,工理管文协调发展,多数专业排名进入中国高校前十名。近年来,通过不断推动国际化办学战略,构建人才培养国际化“大社区”,提升人才培养质量,营造国际化学习和生活环境,学校国际化水平和影响力持续提升。2018年,在校外国留学生已超过2,400人,分别来自147个国家。

北京理工大学热忱欢迎世界各地的优秀学子来校学习!

研究生招生专业

硕士研究生招生专业			博士研究生招生专业(中/英)		
中/英文授课	中文授课				
航空宇航科学与技术	力学	物理学	航空宇航科学与技术	电子科学与技术	数学
机械工程	兵器科学与技术	应用经济学	力学	信息与通信工程	理论物理
电子科学与技术	安全科学与工程	管理科学与工程	兵器科学与技术	控制科学与工程	凝聚态物理
信息与通信工程	工业与系统工程	工商管理	安全科学与工程	计算机科学与技术	管理科学与工程
控制科学与工程	动力工程及工程热物理	能源与气候经济	机械工程	材料科学与工程	应用经济学
计算机科学与技术	光学工程	理论经济学	动力机械与工程	化学工程与技术	工商管理
化学工程与技术	仪器科学与技术	公共管理	光学工程	化学	法律经济学
化学	材料科学与工程	汉语国际教育硕士	仪器科学与技术	生物医学工程	教育学
法学	生物学	外国语言文学			
MBA	生物医学工程	美术学			
	数学	设计学			
	统计学	教育学			

研究生招生专业

学制 硕士研究生: 2年 博士研究生: 4年

申请条件

- 1.非中国国籍,身心健康,遵守中国法律和北京理工大学管理规定。
- 2.硕士申请者应不超过35周岁,博士申请者应不超过40周岁。
- 3.硕士申请者应具有与中国学士学位相当的学位;博士申请者应具有与中国硕士学位相当的学位。
- 4.申请中文授课专业者,须具有HSK5级(含)以上汉语水平证书;申请英文授课专业者,托福成绩须≥85分或雅思综合成绩≥5.5分(英语为母语者除外)。
- 5.MBA申请者须具有1年(含)以上相关工作或实习经验。

申请办法:

- 1.登陆<http://apply.isc.bit.edu.cn>,进行申请并上传相关材料;申请中国政府奖学金者,另须登陆中国国家留学基金管理委员会来华留学网上报名信息平台<http://www.csc.edu.cn/Laihua/>进行申请(项目类型:B;北京理工大学代码:10007)
- 2.等待审核。审核结果可以在BIT报名系统中查询。

申请时间

2018年11月15日至2019年6月15日

2018年11月15日至2019年4月15日(中国政府奖学金项目)



相关费用

报名费: 600元 **学费:** 硕士32000元/学年(中文授课); 36000元/学年(英文授课); 博士 44400元/学年

保险费: 600元/年 **居留许可:** 550元/年

住宿费: 中关村校区:1350元/月 良乡校区:500元/月



About BIT

Founded in 1940, Beijing Institute of Technology(BIT) has been a key member university selected in the state elite university developing programs --- 985 Project and 211 Project and also in the national "Double First-rate" program aiming to promote the development of world-class universities and disciplines. According to UK QS world university rankings 2017, BIT ranks 389th among the "Top 500 World Universities".

BIT has a traditional focus on science and technology but developing into other areas such as management and humanities. By adopting an international education strategy, more and more international students choose to study at "BIT international community". BIT is gaining more influence in the world and is now regarded as one of the best destinations for international students studying in China. In 2018, BIT is home to more than 2,400 international students from 147 different countries.

Welcome to join Beijing Institute of Technology!

Graduate Programs

Master Programs		
Taught in Chinese/English	Taught in Chinese	
Aeronautics&Space Science and Technology Mechanical Engineering Electronics Science and Technology Information and Communication Engineering Control Science and Engineering Computer Science and Technology Chemical Engineering and Technology Chemistry Law MBA	Mechanics Armament Science and Technology Safety Science and Engineering Industrial and System Engineering Power Engineering and Engineering Thermophysics Optical Engineering Instrument Science and Technology Material Science and Engineering Biology Biomedical Engineering Mathematics Statistics	Physics Applied Economics Management Science and Engineering Business Administration Energy and Climate Economy Theoretical Economics Public Administration Teaching Chinese to Speakers of Other Languages Foreign Languages and Literatures Fine Arts Design Study Education

PhD Programs(English/Chinese)		
Aeronautics&Space Science and Technology Mechanics Armament Science and Technology Safety Science and Engineering Mechanical Engineering Power Machinery and Engineering Optical Engineering Instrument Science and Technology	Electronics Science and Technology Information and Communication Engineering Control Science and Engineering Computer Science and Technology Material Science and Engineering Chemical Engineering and Technology Chemistry Biomedical Engineering	Mathematics Theoretical Physics Condensed Matter Physics Management Science and Engineering Applied Economics Business Administration Legal Economics Education

Duration of Study:

2 years for Master programs; 4 years for PhD programs

Qualifications

1. Applicants should be non-Chinese citizens and in good health, and will observe the Chinese laws and the regulations of Beijing Institute of Technology.
2. Applicants for Master programs should be under the age of 35. Applicants for PhD programs should be under the age of 40.
3. Applicants for Master programs should have a Bachelor degree or the equivalent educational background of a Bachelor degree. Applicants for PhD programs should have a Master degree or the equivalent educational background of a Master degree.
4. Applicants for Chinese-taught programs should hold HSK certificate (level 5 minimum); Applicants for English-taught programs should have minimum score 85 in TOEFL or 5.5 overall band in IELTS (English native speakers are exempted).
5. MBA applicants should have at least 1 year related working or internship experience.

Application Procedure

1. Apply online at <http://apply.isc.bit.edu.cn> and upload required documents. CSC scholarship program applicants should apply first on <http://www.csc.edu.cn/Laihua/> (Category:B; Agency No.of BIT:10007) after November 15th, 2018.
2. Wait for review, the result of which can be checked at the application system.

Application Period:

November 15th, 2018 to June 15th, 2019.

November 15th, 2018 to April 15th, 2019 (CSC scholarship program)

Fees:

Application fee: 600CNY/person

Tuition: Master: 32000CNY/year(Chinese-taught); 36000CNY/year(English-taught)

PhD: 44400CNY/year

Insurance fee: 600CNY/year

Visa fee: 550CNY/year

Accommodation fee: Zhong Guan Cun campus: 1350CNY/ month

Liangxiang campus: 500CNY/month



Study in BIT



北京理工大学
BEIJING INSTITUTE OF TECHNOLOGY



北京理工大学留学

北京理工大学留学生中心

地址:北京市海淀区中关村南大街5号

联系人:陈慧 郑焯 牛岩婷

电话:86-10-68918083;68911904

Email: master_phd@bit.edu.cn

网址: <http://isc.bit.edu.cn>

Beijing Institute of Technology

Beijing Institute of Technology

Office of International Students

Address: 5 South Zhong Guan Cun Street, Haidian District, 100081, Beijing, P.R.China

Contact: CHEN Hui/ ZHENG Ye/ NIU Yanting

Tel: 86-10-68918083;68911904

Email: master_phd@bit.edu.cn

Website: <http://isc.bit.edu.cn>

