

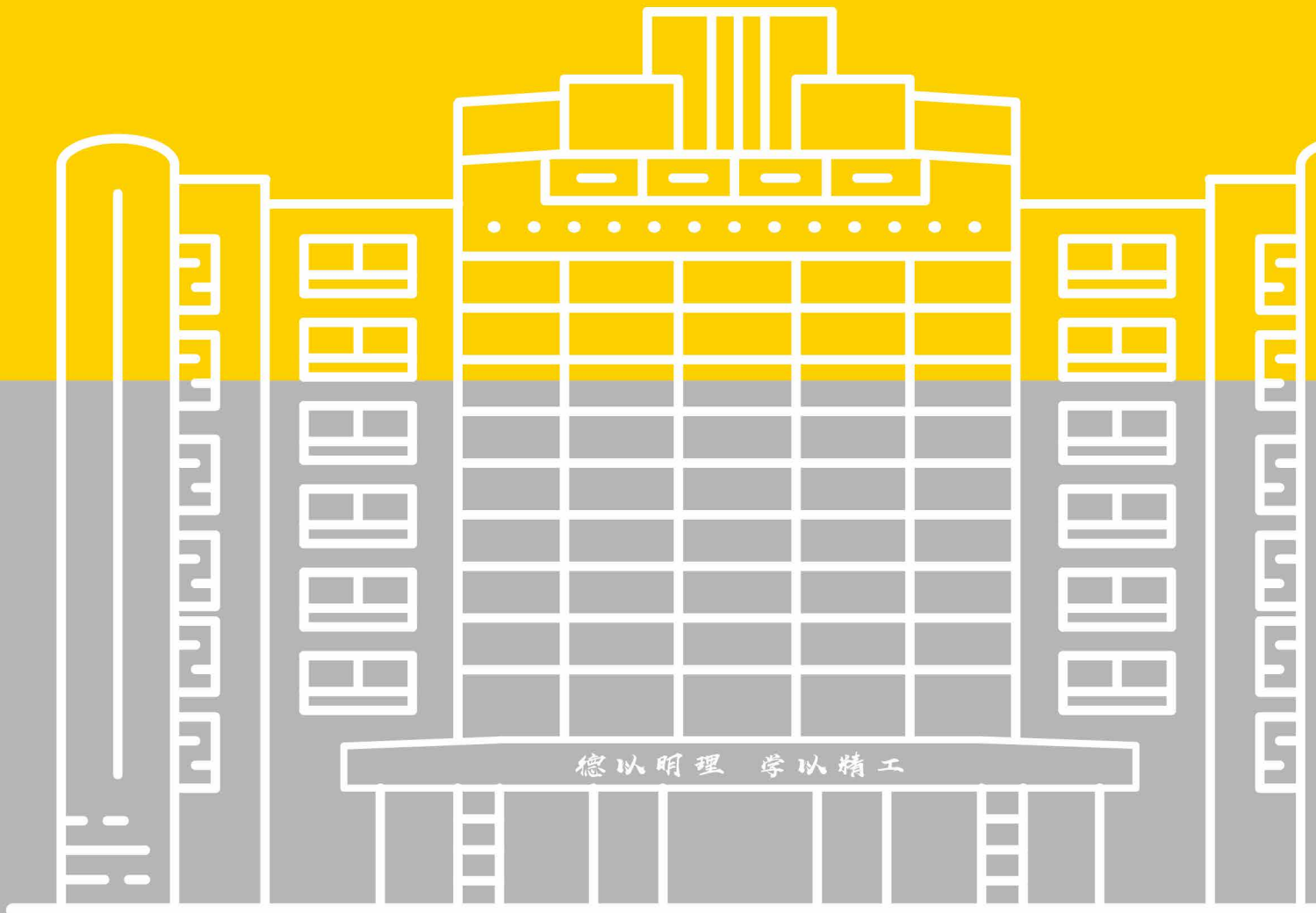


北京理工大学  
BEIJING INSTITUTE OF TECHNOLOGY



Study in BIT

# 2019 BIT Exchange Program for International Students





Study in BIT

## Application and Required Documents

(1) Please apply online by visiting <http://apply.isc.bit.edu.cn>, and upload documents below:

- ① Transcripts at home university (English version with signature and/or seal by the student's home university)
- ② One letter of recommendation by home university professor
- ③ Statement of Purpose clearly indicating duration and purpose of study, preferred technical work or experience and academic background

background

- ④ Photocopy of Passport
- ⑤ Photo of applicant

(2) Student in undergraduate study apply as a "general visiting student" and student in graduate study shall apply as a "senior visiting student" in exchange program.

(3) If you are admitted after documents evaluation, BIT will send you an Admission Notice and JW202 Form by mail.

## Nomination

Nomination from International Office or related office at home university is necessary before we process applicant's online application.

## Application Time

Application for spring semester: Oct 15<sup>th</sup>- Dec 31<sup>st</sup>

Application for fall semester: Mar 15<sup>th</sup>- May 31<sup>st</sup>

## Fees

- (1) Application fee: CNY 500.
- (2) Medical insurance fee: CNY 300 / half year and CNY 600/year.
- (3) You will need to meet your own travel expenses, accommodation charges, living expenses and any additional spending money.

## Accommodation

- (1) Four-bed room in No.16 Dormitory (Zhong Guan Cun Campus): CNY 900/bed/month.
- (2) Exchange students are allowed to choose either live on campus or find an apartment outside on your own. If you are interested in living on campus, please make a dormitory reservation by email.





## Why BIT?

Founded in 1940, Beijing Institute of Technology (BIT) is a public university among top universities in China. Also as a world renowned institute, BIT has made the ranking of 389 among international students, according to QS World University Rankings, and 15 among universities in mainland China.

BIT has a traditional focus on science and technology but developing into other areas such as management and humanities. The Institute emphasizes ethics in scholarship, discovery of truth, and contribution to mankind through profound academic accomplishments. Presently BIT has more than 2400 foreign students from 147 different countries.

## Overview

Beijing Institute of Technology (BIT) has currently signed agreements on exchange program with more than 200 universities worldwide. We welcome students from the partner universities to study in the exchange programs in BIT.

Exchange students to BIT can study in the regular degree programs conducted in English or Chinese, they are also welcomed to study in our Chinese language study program. No tuition fee for the exchange students. We receive students from undergraduate, master and PhD level from the home university, except the first and second year undergraduate students. The exchange program extends from one semester to two semesters in the academic program or Chinese language program.

## English-taught Programs

| Undergraduate Program             | Master Program                            |
|-----------------------------------|---|
| Mechanical Engineering            | Mechanical Engineering                    |
| Electronic Engineering            | Electronic Science and Technology         |
| Electrical Engineering            | Information and Communication Engineering |
| Computer Science and Technology   | Control Science and Engineering           |
| International Economics and Trade | Computer Science and Technology           |
|                                   | Chemistry                                 |
|                                   | Chemical Engineering and Technology       |
|                                   | Law                                       |
|                                   | MBA                                       |





北京理工大学  
BEIJING INSTITUTE OF TECHNOLOGY



## Beijing Institute of Technology

Office of International Students

Address: 5 South Zhong Guan Cun Street, Haidian District, 100081, Beijing, P.R.China

Contact: Ms. ZONG Xin / Ms. XUE Bingchen

Tel: 86-10-68918541

Email: [exchange@bit.edu.cn](mailto:exchange@bit.edu.cn)

Website: <http://isc.bit.edu.cn>